

# FLOAT CONTROL PANELS BY EG CONTROLS



*Intelligent float control solutions designed to meet your pumping requirements and more...*



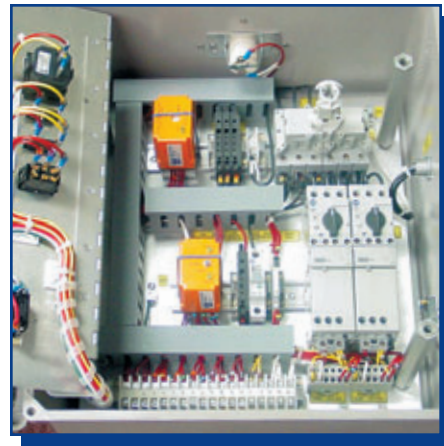
**EG  
CONTROLS**  
JACKSONVILLE, FLORIDA



## DER FLOAT CONTROL PANELS

Duplex Only • 230 Volt • 1 or 3 Phase • IEC Rated • UL Label

*Now you can have a low-cost, highly reliable  
**RELAY LOGIC** control solution designed to meet  
your pumping requirements!*



### Each DER Control System includes the following:

- Manual Transfer Switch
- Lightning Arrestor
- Modular Compact Combination Starter Unit
- Alternator with Lead/Lag Selector Switch
- Emergency Power Generator Receptacle (60 Amps Max)
- Phase Monitor/Undervoltage Relay
- High Water Alarm Beacon and Horn
- N4X Fiberglass Enclosure

### About EG Controls

EG Controls specializes in the manufacture of pump controls for the water and wastewater industries. Dedication to product quality and innovation has made EG a nationwide leader for 40 years.

Put 40 years of EG experience to work for you...call us at (904) 292-0110.



# SLIMVIEW FLOAT CONTROL PANELS

Duplex Only • 1 or 3 Phase • IEC Rated • UL Label



*Introducing a new low-cost, highly reliable  
**SOLID STATE** control solution designed to meet  
your pumping requirements!*



## SlimView Control System Key Features:

- Operator Display/Entry Screen
- Start and Stop up to two pumps based on floats — 3 floats required
- Select either Pump 1 or 2 as the Lead Pump and set system to alternate on a regular basis
- Provides the following Alarms along with an Alarm Beacon and Horn:
  - High Level Alarm (requires one float)
  - Fail to Start for both pumps
  - Seal Failure for both pumps
  - Overtemperature for both pumps
  - Float Sequence Alarm
- Includes the following indicators:
  - RUN for both pumps
  - STOPPED for both pumps
  - Alternation ON or OFF
  - Lead Pump
- Float Sequencing Problems showing the specific problem float on the alarm page and shifting control to the next higher float
- Provides an Analog Display for one Analog Input (0-100%)
- Offers High Level Alarm Dry Contact Output for Customer Use
- Second Pump Delay Start on Power Restoration

## Each SlimView Control System includes the following:

- Operator Display/Entry Screen
- PLC Controller
- Control Breakers
- Modular Compact Combination Starters
- Main Line Lug
- Alarm Beacon and Horn
- Lightning Arrestor
- N4X Fiberglass Enclosure
  - 24" x 20" for 1 phase panels
  - 18" x 16" for 3 phase panels
- UL Label

If you need additional options or a higher HP, please contact EG Controls at (904) 292-0110 to request a quotation.



## FLOAT CONTROL PANELS

*Economical, highly reliable  
control solutions designed to meet  
your pumping requirements!*

**Simplex or Duplex, 208V, 230V or 460V, 1 or 3 Phase, NEMA or IEC Rated  
Your Choice of Fiberglass, Painted Steel or Stainless Enclosures  
Standard Panels Available for up to 15 HP (Higher HP Available upon Request)**

### **Each panel includes the following:**

- Incoming Main Line Lug
- Motor Starter(s)
- 120V Float Control
- Run Pilot Lights
- Anti-Condensation Heater
- Pump Circuit Breaker(s)
- Control Circuit Breaker
- Hand-Off Automatic Switches
- Terminal Strip
- Inner Door

### **Upgrade to a QF Float Panel with the exclusive EG Logic Chassis:**

- Lead Pump Selector Switch
- LED Status Indicator Lights (For Relay Function)
- Power On Pilot Light
- 24V Float Control
- Level Alarm Pilot Light
- Motor Monitor Contact Connection (O/T)
- Alarm Silence Pushbutton
- Duplex and Simplex Convenience Receptacle
- Duplex Alternator

### **All of the following can be ordered as additional options:**

- Lightning or Surge Arrestor
- Main Breaker
- Manual Transfer Assembly
- Generator Receptacle
- Line Monitor Protection
- Single Phase Start Kit Install (Customer Provided)
- Control Power Transformer
- On/Off Heater Switch
- GFCI Duplex Receptacle
- Elapse Time Meter(s)
- Cycle Counter
- Overtemp and/or Seal Fail Alarms
- 24V Float Control
- Intrinsic Safe Float Control
- Float Status Pilot Lights
- Pump Start Time Delay (LAG)
- High and/or Low Level Float Circuits
- Audible or Visual Alarms
- Remote Alarm Enclosure
- Phone Dialer
- UL Power Supply
- Isolated Dry Contacts

Additional items available upon request...



**EG  
CONTROLS**  
JACKSONVILLE, FLORIDA

11790 Philips Highway • Jacksonville, FL 32256  
(904) 292-0110 • Fax (904) 292-0119  
[www.egcontrols.com](http://www.egcontrols.com)